

## Nilfisk Compact Vac A Compressed Air Vacuum Specifications



Minimum Compressor Required	h.p.	20
Air Hose Diameter	inches	1/2
Input Supply Air	psi	90
Input Supply Air	cfm	70
Maximum Output Airflow	cfm	140
Maximum Waterlift at Control Pressure	inches	172
Air Performance	air watts	392
Tank Capacity	gallons dry bulk	1
Paper Bag Capacity	gallons dry bulk	1
Filter Area	square inches	1151
Dimensions (L x W x H)	inches	23 x 15 1/2 x 22
Container Diameter	inches	10.5
Weight with Back Pack	lbs.	14
Sound Level	dB(A) at 6'6"	77



## Instructions for Use Nilfisk Compact Vac A Compressed Air Vacuum

**WARNING:** This Nilfisk vacuum cleaner or any other vacuum cleaner is not to be used in explosion-hazardous areas, as serious injury could result.



Under no circumstances may this cleaner be used safely for the collection of hazardous or toxic materials unless equipped with special HEPA\* filters and bags which have been installed according to written instructions from Nilfisk-Advance.

**ATTENTION EMPLOYER:** Please ensure these Instructions for Use are made available and understood by your employees or any other persons who use this equipment.

To list all toxic and hazardous materials would be beyond the scope of these instructions. It is the Employer's responsibility to identify, for Employee's and others' information, hazardous or toxic materials which may be collected by this equipment. Such information must be communicated to your Employees and other potential users of this equipment.

Your new Nilfisk industrial vacuum cleaner is a precision-engineered instrument designed for exceptionally fine filtration. Ordinary vacuum cleaners do not have HEPA filters and cannot be used safely for hazardous dusts. This Nilfisk machine is safe to use as a dust collector for finely ground materials, as long as certain precautions are taken. Proper care of this cleaner is essential to the maintenance of its ultrafine filtering capabilities.

**BEFORE USE:** DO NOT ATTEMPT TO OPERATE THIS CLEANER UNTIL YOU HAVE INSTALLED ITS VARIOUS COMPONENTS ACCORDING TO THE FOLLOWING INSTRUCTIONS.

### MACHINE SET-UP

1. Remove vacuum from backpack frame by removing the two (2) pull pins located behind the vacuum container and release the air supply quick coupler.
2. Installing the Polyliner and Paper Bag:
  - A. Unclamp the two container clips located on the body of the container.
  - B. Lift off the venturi assembly.
  - C. Open the polyliner and place it in the bottom of the container flush against the container sides and lipped under the container inlet (Photo 1).
  - D. Drape the excess length of polyliner over the top of the container and down the outside, then roll the edge to permit the container to close.

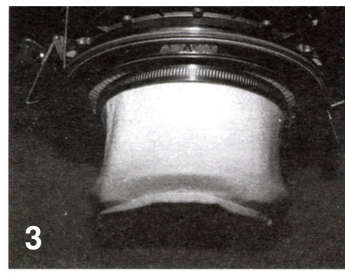
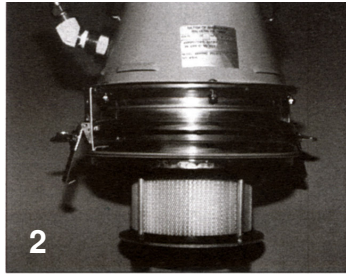


\*HEPA-High Efficiency Particulate Air – Retains 99.97% of particles to 0.3 microns in size.

E. Install a paper bag inside the polyliner by expanding the folds of the bag and piercing the perforations within the bag inlet collar. Then slide the round paper bag collar opening over the plastic inlet tube of the vacuum orifice.

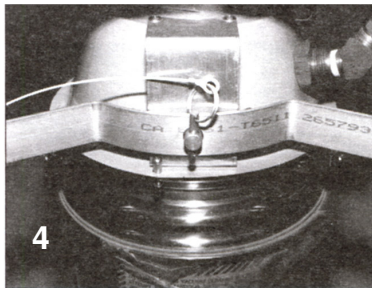
3. Installing the Microfilter:

- A. Slide microfilter (#61682100) over the HEPA filter making sure to pull it up as far as it will go, covering the HEPA housing completely.
- B. Secure with metal clamp band around the filter and tighten (Photos 2 & 3). NOTE: Make sure the metal band seats firmly against the venturi plate.
- C. Clamp venturi assembly back onto the container and close the clips.



D. Connect the vacuum to the back frame.

- a. Fit the two protruding bolts on the back of the machine into the holes in the curved metal plates on the back frame (Photo 4).
- b. Lock the back frame in place by inserting each of the safety pegs (pull rings suspended on cords from the back frame) into the holes in the bolts on the Compact Vac A (Photo 5). Then connect the air supply quick coupler.
- c. The back frame's shoulder straps can be adjusted to operator size by pulling or loosening the lower straps through the buckles. Also provided for proper balance is a waist strap that is pulled around the operator and buckled in front.



4. Abrasive Tool Set-up

- A. Connect 1 1/2" diameter hose to the vacuum by twisting the coupler (#01782600) into the vacuum orifice clockwise.
- B. Connect the 4.5" sander/grinder, 5' long needle gun or pistol grip needle gun to the opposite end of the hose by sliding the coupler (#01716500) over the 1 1/2" diameter vacuum take off on the tool shroud. Slide the plastic hose with cuff onto the inlet coupler.
- C. Turn vacuum on by opening the air valve before using abrasive tool.

5. Cleaning Accessories Set-up

- A. Connect the tapered hose (#12097500) to the vacuum by twisting the coupler into the vacuum orifice clockwise.
- B. Connect any of the cleaning accessories to the opposite end of the hose by sliding the accessory over the metal tube at the end of the hose.

## EMPTYING

**WARNING:** IF THIS VACUUM CLEANER IS USED TO COLLECT HAZARDOUS MATERIAL, DO NOT ATTEMPT TO OPEN OR EMPTY ITS CONTENTS WITHOUT PERSONAL PROTECTIVE CLOTHING AND RESPIRATORY PROTECTION.

1. To empty the container and its contents, first turn off the venturi.
2. Allow the cleaner to sit undisturbed for at least thirty (30) seconds.
3. Remove vacuum from back frame by removing the two pull pins located behind the vacuum container.
4. Unclamp the container clips located on the body of the container.
5. Turn on the venturi once the seal is broke and lift off the venturi assembly with the HEPA filter spacer.
6. Gently slide the round paper bag collar opening off of the plastic inlet tube of the vacuum orifice.
7. Pull the polyliner around the paper bag and seal off the polyliner with the paper bag inside.
8. Install a new polyliner and paper bag according to the previous instructions (Machine Set-up, Step 2).

## FILTER REPLACEMENT

To ensure that your Nilfisk cleaner delivers the years of trouble-free operation for which it was designed, it is necessary to check and replace filters regularly.

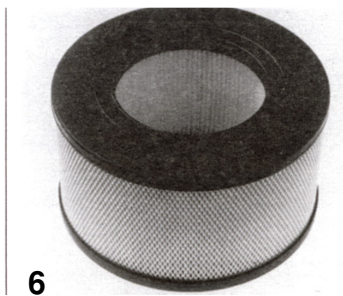
The internal microfilter and HEPA filter of the Compact Vac A are located directly under the venturi housing.

1. Microfilter: This small white sock, which fits over the HEPA filter spacer, will require periodic inspection. Dust will discolor the white microfilter. Change the microfilter as soon as any discoloration is easily noticable.
  - A. Loosen the metal clamp band with a screw driver and pull the microfilter off the HEPA filter housing.
  - B. Pull the new one on, making sure to pull it up as far as it will go, covering the HEPA housing completely.
  - C. Replace the metal band around the filter and tighten. **NOTE:** Make sure the metal band seats firmly against the underside of the venturi assembly. **WARNING:** Do not shake the microfilter, since this can cause liberation of potentially harmful microscopic dust into the air. Do not launder the microfilter. Remove carefully and discard with the collected debris in the sealable poly bag.
2. Internal HEPA Cartridge: The vacuum's internal HEPA filter should be changed approximately every fourth time the microfilter is changed. Exact life will depend upon application, frequency of use and prefilter maintenance.

Every Nilfisk replacement filter (#017276-31) (Photo 6) comes with a new foam rubber sealing gasket.

Installing the internal filter cartridge:

- A. Remove the microfilter by loosening its metal band and pulling it off like a sock. You will now see the cartridge in its cage-like holder (Photo 2).
- B. To remove the cartridge, loosen and remove the four (4) wing nuts from beneath the holder.
- C. Pull the metal plate free of the four pegs and carefully remove the filter.
- D. Also remove the foam gasket. Discard both items and the microfilter with the collected debris in a sealable poly bag.
- E. To install the new filter, place the new gasket in the recess of the filter holder.
- F. Then install the HEPA cartridge label side out in the holder.
- G. Replace the metal plate and secure it with the wing nuts. NOTE: Make sure the wing nuts are well tightened to provide the necessary seal. When tightening the wing nuts, make sure that the nuts on the underside of the filter mounting plate do not get caught on the filter end cap. Do not over tighten.
- H. Replace the black rings that cover the tabs of the wing nuts. The clearance between the bottom filter end cap and the base of the filter mounting plate should be 5/32".
- I. Install a new microfilter (see instructions above), polyliner and paper bag, then assemble the container.



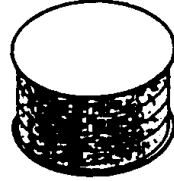
**WARNING:** Use only genuine NILFISK replacement filter components. The use of substitute components could pose a grave risk of personal exposure, and will cause all equipment warranties to be void.

## Compact Vac A Accessories

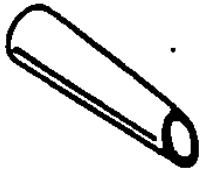
---



3" Round Brush  
112769-01



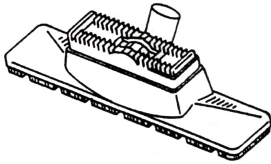
HEPA Replacement Cartridge  
017276-31



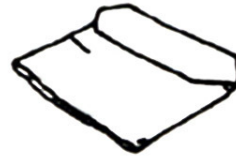
Rubber Nozzle  
81140900



Standard Microfilter  
61682100



3 in 1 Floor Nozzle  
11450201



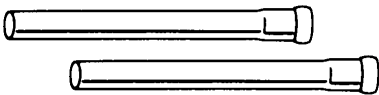
Polyliners (25/pkg.)  
01719000



6'6" Plastic Hose  
12097500



Paper Bags (5/pkg.)  
81620000



Straight tube 22" (each)  
11112400



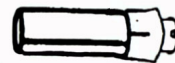
017196-15  
Cuff



81813800  
Hose



017196-15  
Cuff



017826-00  
Coupler

Abrasive Tool Hose Assembly

## **WARRANTY**

The Nilfisk companies warrant that Nilfisk equipment will be free of defects in workmanship or material for a period of two years from the date of delivery. Should any failure to conform to this warranty appear, the Nilfisk companies shall upon notification within such time period, correct such non-conformity, at its option, either by repairing any defective part or parts, or by replacing a part or parts provided that the equipment is returned to an authorized Nilfisk service facility. In all cases freight both ways will be at the expense of the customer. Equipment shall not be returned without advance notice to, and consent of the Nilfisk companies.

EXCEPT AS SPECIFICALLY SET FORTH HEREIN, THE NILFISK COMPANIES MAKE NO WARRANTIES, EITHER EXPRESSED OR IMPLIED AS TO ANY MATTER WHATSOEVER, INCLUDING WITHOUT LIMITATION ANY AND ALL WARRANTIES OF MERCHANTABILITY, FITNESS FOR PURPOSE, OR OTHER WARRANTIES, ALL OF WHICH ARE EXPRESSLY DISCLAIMED AND EXCLUDED. NEITHER PARTY SHALL BE LIABLE TO THE OTHER FOR SPECIAL, INDIRECT, INCIDENTAL OR CONSEQUENTIAL DAMAGES, INCLUDING BUT NOT LIMITED TO LOSS OF PRODUCTION, LOSS OF TIME, LOSS OF PROFITS OR OTHER SIMILAR INDIRECT LOSSES WHICH MIGHT OCCUR AS A RESULT OF DEFECTS, PARTIAL OR TOTAL FAILURE OF THE PRODUCT TO PERFORM AS SPECIFIED.

Correction of non-conformities or defects in the manner and for the period of time provided above, shall constitute fulfillment of all liabilities of the Nilfisk companies to the customer, whether based on contract, negligence or otherwise with respect to, or arising out of such equipment. The remedies set forth herein are exclusive, and the liability of the Nilfisk companies with respect to this sale or anything done in connection therewith, whether in contract, in tort, under any warranty, or otherwise, shall not except as expressly provided herein, exceed the price of the equipment or part on which such liability is based.

The warranty does not cover repairs due to normal wear and tear, accident, neglect, misuse or abuse, incorrect installation or use other than as described in the instruction booklet. Breaks in hoses and cables are not covered. This warranty is rendered void if the motor number plate is removed or defaced or if repairs are made or attempted by persons not authorized by the Nilfisk companies.